
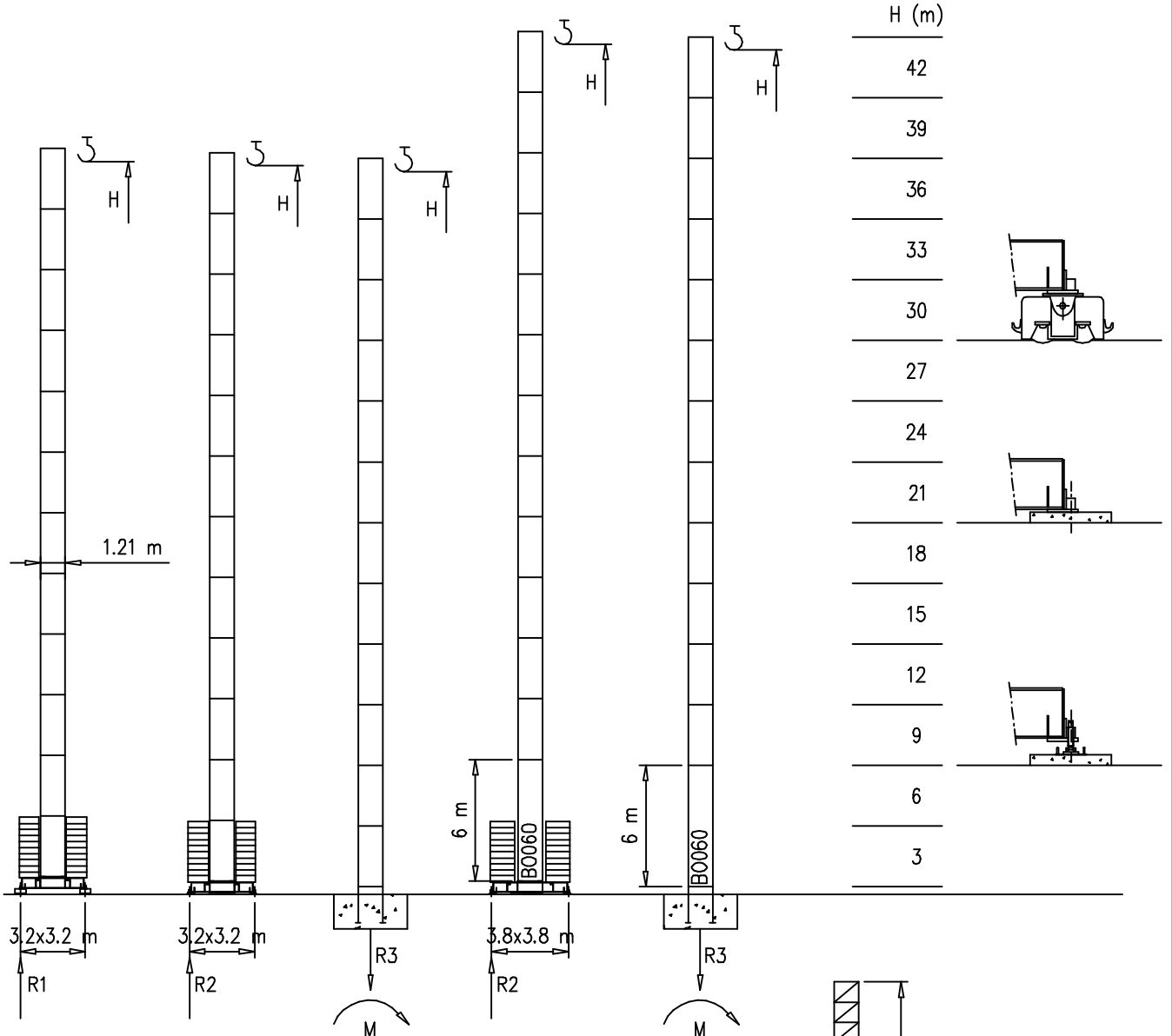


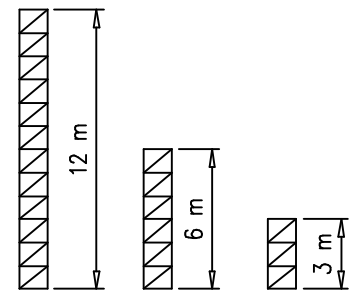
Torre/Reazioni – Masts/Reactions – Mat/Réactions – Maste/Eckdrücke – Măstil/Reacciones – Tramo/Reacções

S1210

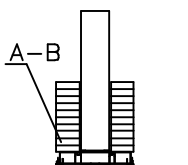
 25 m → 42 m



H=37-42 m		H=24-36 m		H=0-23 m	
R1		R1	53 t	R1	49 t
R2	69 t	R2	53 t	R2	47 t
R3	40 t	R3	25.6 t	R3	22 t
M	185 tm	M	116 tm	M	80 tm

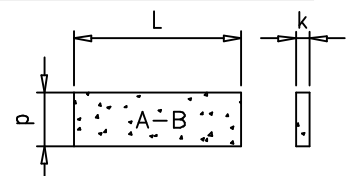


Peso zavorra – Ballast weight – Poids du lest – Ballastgewicht – Peso de lastre



H	n°	Tot.
0-18 m	12 A-B	36000 kg
19-36 m	18 A-B	54000 kg
37-42 m	24 B	72000 kg

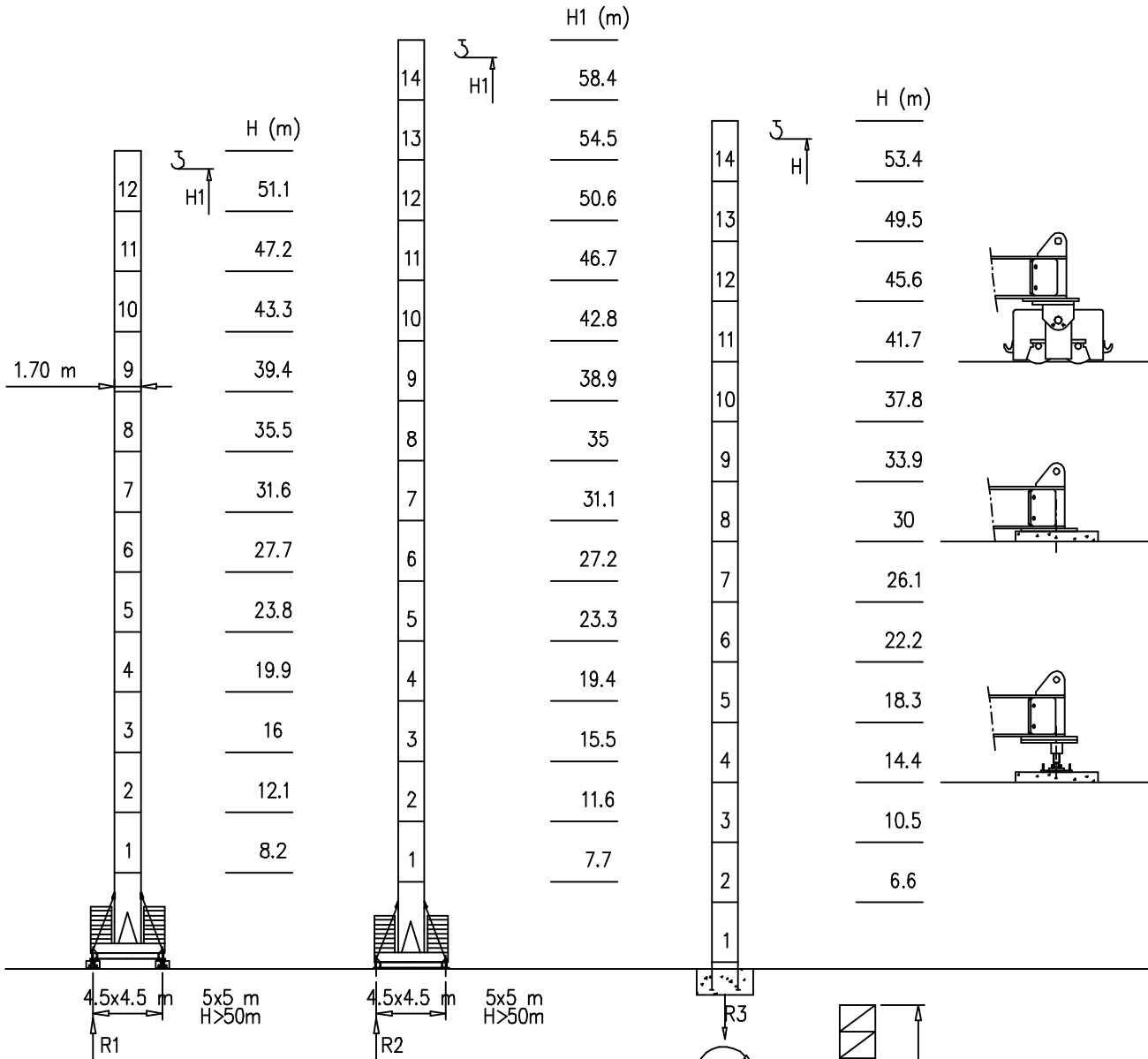
	A	B
L	3.6m	4.0m
k	0.3m	1.2m
d	1.15m	0.19m



Torre/Reazioni – Masts/Reactions – Mat/Réactions – Maste/Eckdrücke – Măstil/Reacciones – Tramo/Reacções

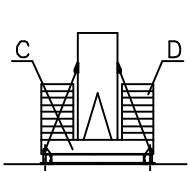
S1700

25 m → 42 m

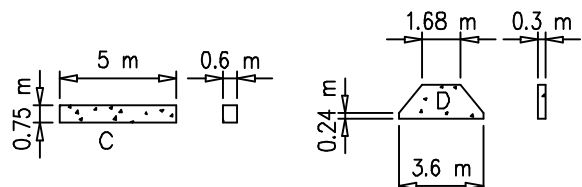


H=46-58 m		H=36-45 m		H=0-35 m	
R1	106 t	R1	72 t	R1	65 t
R2	106 t	R2	72 t	R2	65 t
R3	95 t	R3	61 t	R3	54 t
M	336 tm	M	194 tm	M	156 tm

Peso zavorra – Ballast weight – Poids du lest – Ballastgewicht – Peso de lastre

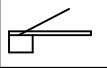
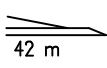
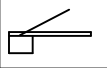
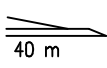
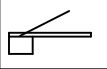
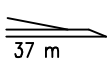
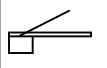
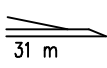
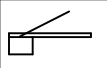
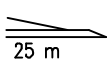


H	n°	Tot.
0-35 m	2C+ 18D	60800 kg
36-45 m	2C+ 22D	72000 kg
46-58 m	2C+ 32D	105000 kg

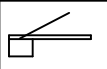
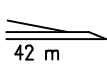
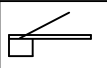
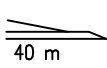
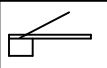

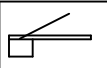
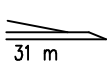
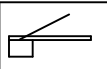
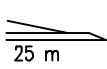


Curve di carico – Courbes de charges – Load diagrams – LastKurven – Curvas de cargas

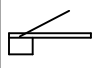
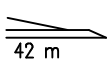
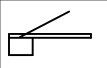
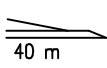
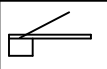
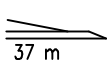
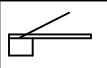
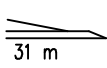
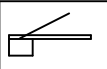
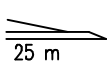
Pmax 2500 kg

	8250 kg		2	22	24	26	28	30	32	34	36	38	40	42	m
			2500	2500	2300	2000	1900	1800	1550	1450	1350	1200	1150	1050	kg
	8250 kg		2	22	24	26	28	30	32	34	36	38	40	m	
			2500	2500	2300	2000	1900	1800	1600	1500	1400	1270	1200	kg	
	6600 kg		2	22	24	26	28	30	32	34	36	37	m		
			2500	2500	2300	2000	1900	1800	1600	1500	1400	1300	kg		
	4950 kg		2	22	24	26	28	30	31	m					
			2500	2500	2300	2000	1900	1800	1700	kg					
	4950 kg		2	22	24	25	m								
			2500	2500	2300	2100	kg								

Pmax 3000 kg

	8250 kg		2	18	20	22	24	26	28	30	32	34	36	38	40	42	m
			3000	3000	2800	2500	2300	2000	1900	1800	1550	1450	1350	1200	1150	1050	kg
	8250 kg		2	18	20	22	24	26	28	30	32	34	36	38	40	m	
			3000	3000	2800	2500	2300	2000	1900	1800	1600	1500	1400	1270	1200	kg	
	6600 kg		2	18	20	22	24	26	28	30	32	34	36	37	m		
			3000	3000	2800	2500	2300	2000	1900	1800	1600	1500	1400	1300	kg		
	4950 kg		2	18	20	22	24	26	28	30	31	m					
			3000	3000	2800	2500	2300	2000	1900	1800	1700	kg					
	4950 kg		2	18	20	22	24	25	m								
			3000	3000	2800	2500	2300	2100	kg								

Pmax 4000/2000 kg

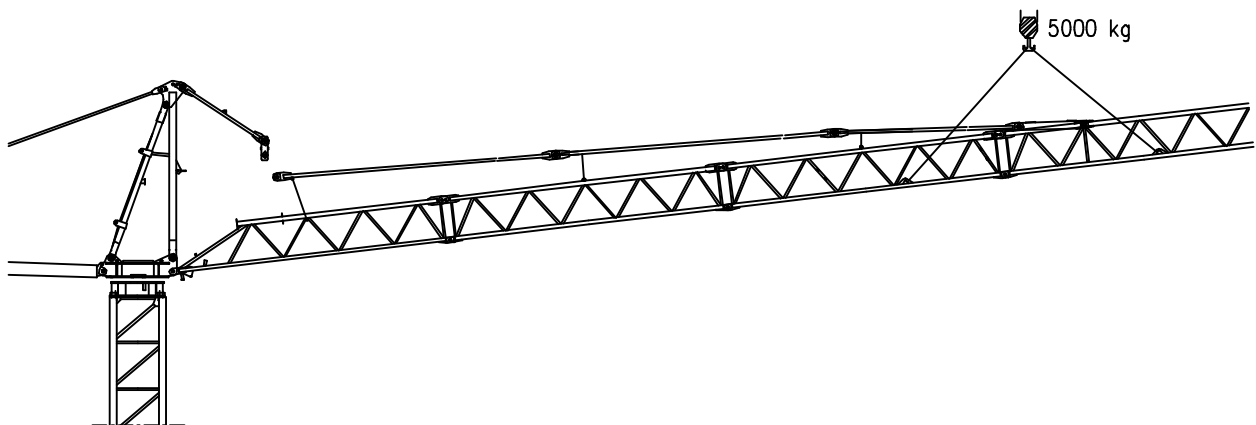
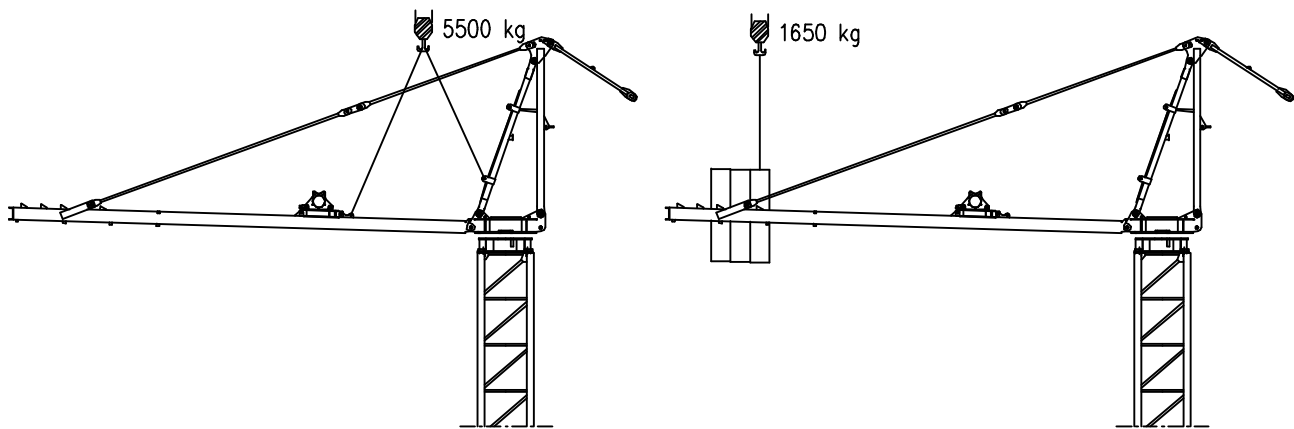
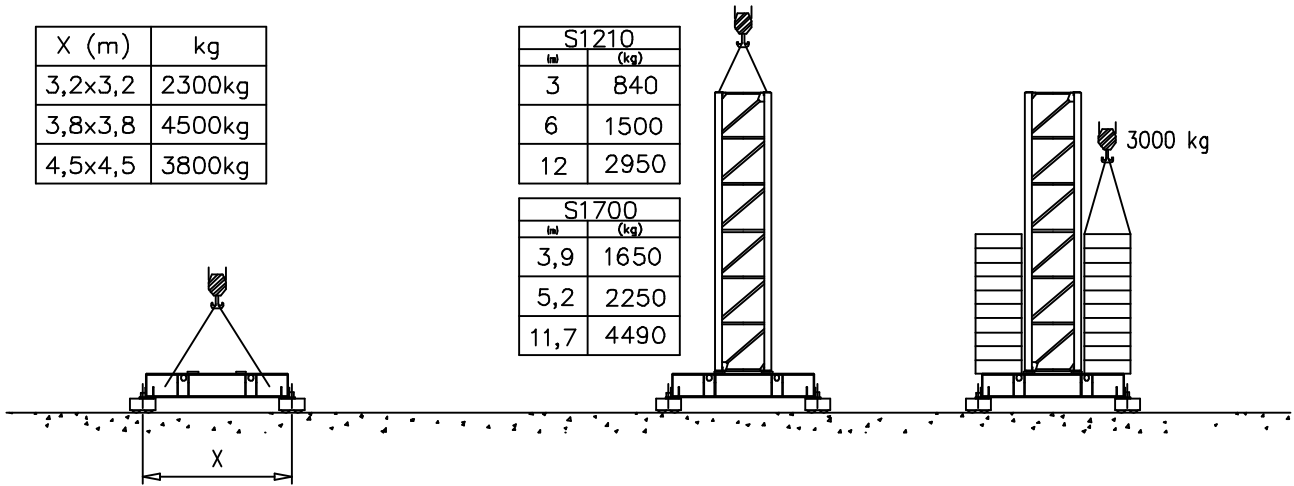
	8250 kg		2	14	16	18	20	22	24	26	28	30	32	34	36	38	40	42	m
			4000	4000	3600	3200	2800	2500	2300	2000	1900	1800	1550	1450	1350	1200	1150	1050	kg
	8250 kg		2	14	16	18	20	22	24	26	28	30	32	34	36	38	40	m	
			4000	4000	3600	3200	2800	2500	2300	2000	1900	1800	1600	1500	1400	1270	1200	kg	
	6600 kg		2	14	16	18	20	22	24	26	28	30	32	34	36	37	m		
			4000	4000	3600	3200	2800	2500	2300	2000	1900	1800	1600	1500	1400	1300	kg		
	4950 kg		2	14	16	18	20	22	24	26	28	30	31	m					
			4000	4000	3600	3200	2800	2500	2300	2000	1900	1800	1700	kg					
	4950 kg		2	14	16	18	20	22	24	25	m								
			4000	4000	3600	3200	2800	2500	2300	2100	kg								

Montaggio – Montage – Erection – Montage – Montaje – Montagem

X (m)	kg
3,2x3,2	2300kg
3,8x3,8	4500kg
4,5x4,5	3800kg

S1210	
ml	(kg)
3	840
6	1500
12	2950

S1700	
ml	(kg)
3,9	1650
5,2	2250
11,7	4490



Meccanismi – Mechanisms – Mécanismes – Antriebe – Mecanismos

Sollevamento S15.40 e V15.40 Hoisting Levage Heben Elevaciòn Elevaçao			1a	4 m/min	2500 kg	11 kW	S15.40		
2a			20 m/min	2500 kg	V15.40				
			3a	40 m/min	1200 kg		20 kVA		
Sollevamento S20.60 e V20.60 Hoisting Levage Heben Elevaciòn Elevaçao			1a	7 m/min	2500 kg	14.7 kW	S20.60		
			2a	28 m/min	2500 kg		28 kVA		
				3a	56 m/min		1200 kg	V20.60 24 kVA	
Sollevamento S20.40 e V20.40 Hoisting Levage Heben Elevaciòn Elevaçao			1a	4 m/min	3000 kg	14.7 kW	S20.40		
			2a	20 m/min	3000 kg		28 kVA		
				3a	40 m/min		1500 kg	V20.40 24 kVA	
Sollevamento S25.60 e V25.60 Hoisting Levage Heben Elevaciòn Elevaçao			1a	7 m/min	3000 kg	18.5 kW	S25.60		
			2a	28 m/min	3000 kg		34 kVA		
				3a	56 m/min		1500 kg	V25.60 28 kVA	
Sollevamento S15.40 e V15.40 Hoisting Levage Heben Elevaciòn Elevaçao			1a	4 m/min	2000 kg	11 kW	S15.40		
			2a	20 m/min	2000 kg			22 kVA	
				3a	40 m/min			1200 kg	V15.40 20 kVA
			1a	2 m/min	4000 kg		11 kW	V15.40 20 kVA	
			2a	10 m/min	4000 kg				
				3a	20 m/min				2400 kg
Sollevamento S20.60 e V20.60 Hoisting Levage Heben Elevaciòn Elevaçao			1a	7 m/min	2000 kg	14.7 kW	S20.60		
			2a	28 m/min	2000 kg			28 kVA	
				3a	56 m/min			1200 kg	V20.60 24 kVA
			1a	3.5 m/min	4000 kg		14.7 kW	V20.60 24 kVA	
			2a	14 m/min	4000 kg				
				3a	28 m/min				2400 kg
Carrello Trolleying Distribution Katzfahren Distribuciòn Distribuiçao			1a	OP 5 m/min	4000 kg	2.2 kW	Potenza elettrica necessaria Puissance électrique nécessaire Necessary electric power Anschlusswert – Potencia		
			2a	25 m/min	4000 kg				
			3a	50 m/min	2000 kg				
Rotazione Slewing Orientation Schwenken Orientaciòn Rotaçao			1a	0 → 0.2	giri/min tr/min rp/min	2.2 kW @ 1200rpm	Potenza elettrica necessaria Puissance électrique nécessaire Necessary electric power Anschlusswert – Potencia		
			2a	0 → 0.6					
			3a	0 → 0.9					
Traslazione Travelling Translation Kranfahren Traslaciòn Traslaçao			1a	0 → 20	3.7 kW	Potenza elettrica necessaria Puissance électrique nécessaire Necessary electric power Anschlusswert – Potencia			

Rete elettrica – Réseau – Mains supply – Netzstrom – Red – Rede electrica 400V – 50 Hz

FMgru s.r.l.
 via Emilia 11–29010 Pontenure PC ITALY
 tel. 0523/510446 ric.aut. fax 0523/510365
 www.fmgru.com e-mail: info@fmgru.com

FEM 1.001
2000/14/CE



Documento commerciale non contrattuale
Per tutte le informazioni tecniche riferirsi
alle corrispondenti istruzioni

Unverbindliches Vertriebsdokument.
Für technische Informationen, siehe die
entsprechenden Anweisungen.

This commercial document is not legally
binding. For any technical information, please
refer to the corresponding instructions.

Documento comercial no contractual
Para cualquier información técnica,
ver la noticia correspondiente.

Code: 15ICA37C56A0

Ed.	Data	Rev	Data
1	05.06.03	1	23.11.03