

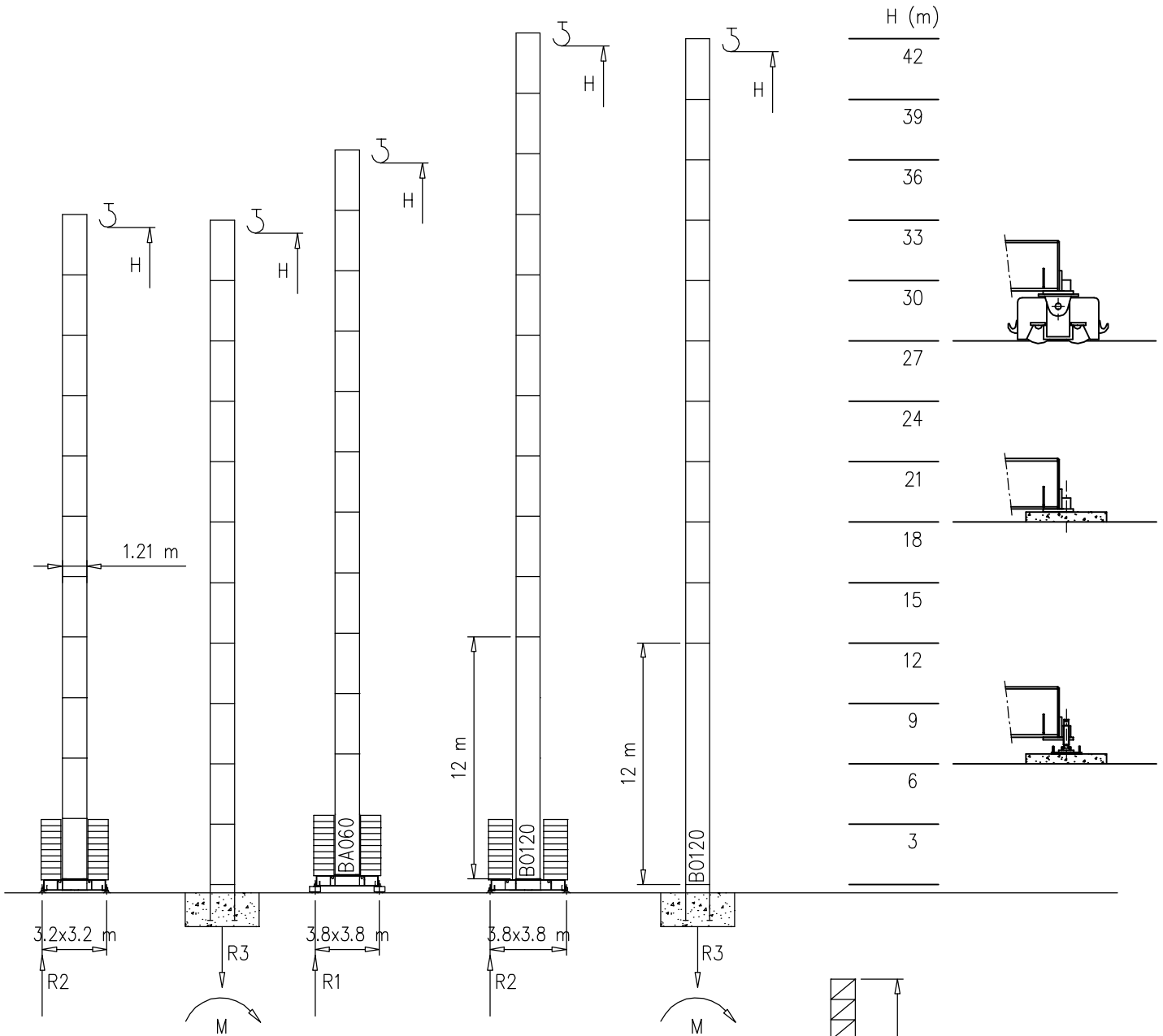
1.5 m
H=58.4 m
H=42 m

● ○

- S1210 - 1.21x1.21 m
- S1700 - 1.70x1.70 m

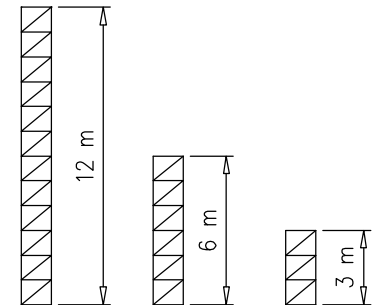
S1210

 15 m \rightarrow 47.5 m



H (m)
42
39
36
33
30
27
24
21
18
15
12
9
6
3

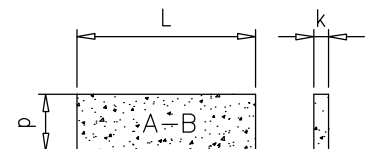
H=37-42 m		H=24-36 m		H=0-23 m	
R1		R1	53 t	R1	49 t
R2	69 t	R2	53 t	R2	47 t
R3	40 t	R3	25.6 t	R3	22 t
M	185 tm	M	116 tm	M	80 tm



Peso zavorra – Ballast weight – Poids du lest – Ballastgewicht – Peso de lastre

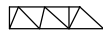
H	n°	Tot.
0-18 m	12 A-B	36000 kg
19-33 m	18 A-B	54000 kg
34-36 m	20 B	60000 kg
37-42 m	24 B	72000 kg

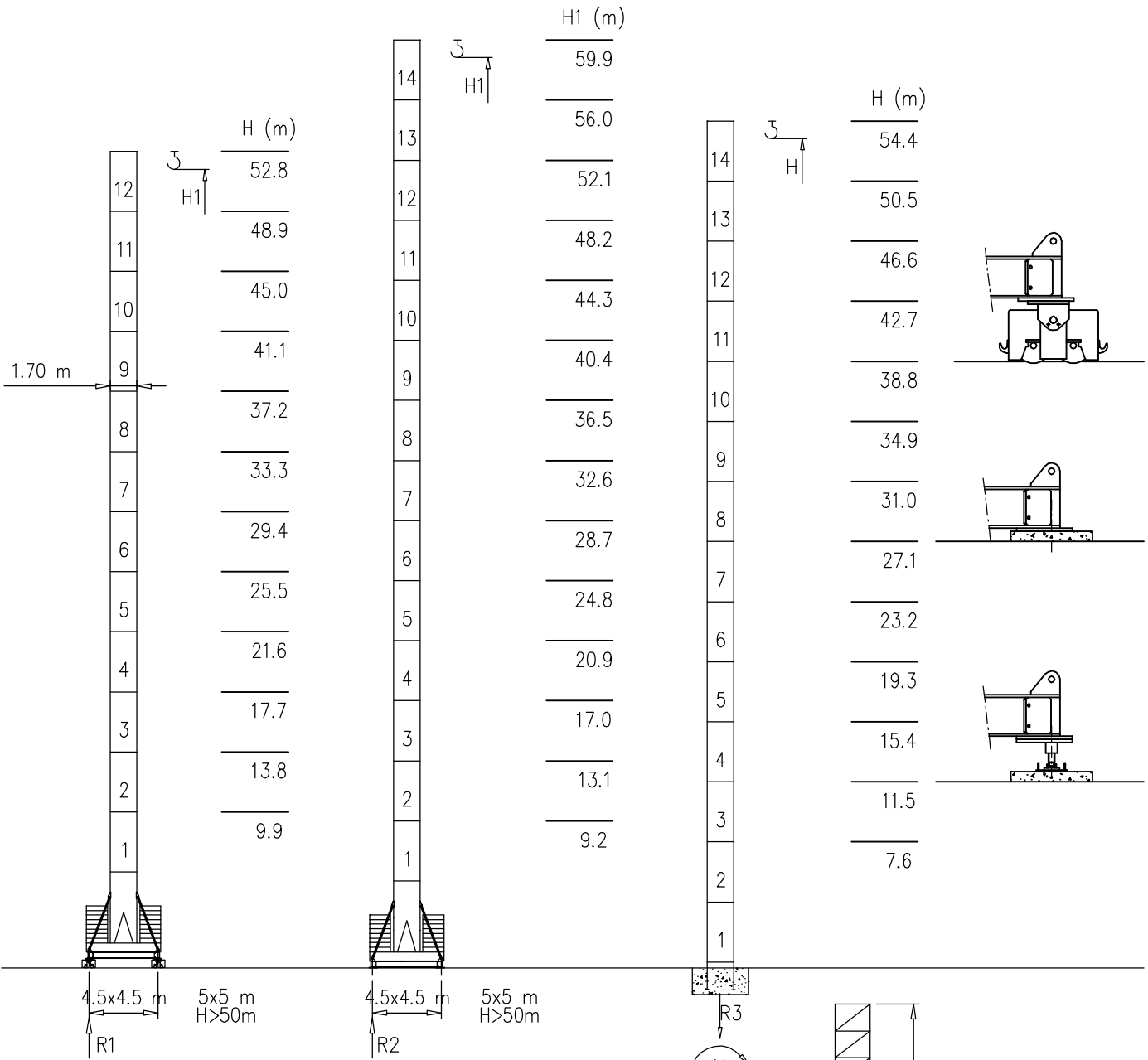
	A	B
L	3.6m	4.0m
k	0.3m	0.19m
d	1.15m	1.2m



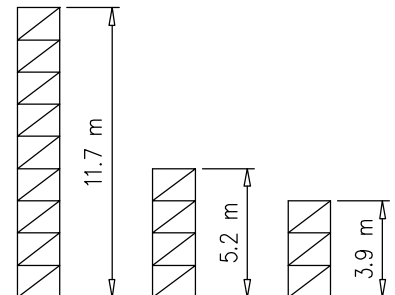
Torre/Reazioni – Masts/Reactions – Mat/Réactions – Maste/Eckdrücke – Măstil/Reacciones – Tramo/Reacções

S1700

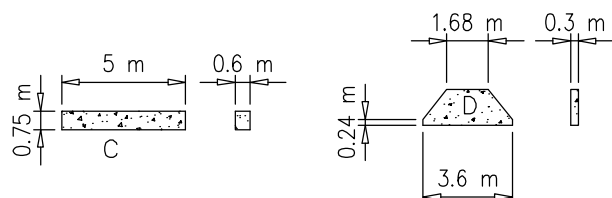
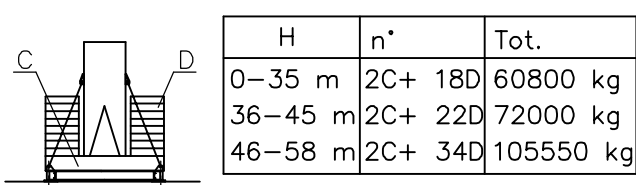
 15 m \rightarrow 47.5 m



H=46–58 m		H=36–45 m		H=0–35 m	
R1	106 t	R1	72 t	R1	65 t
R2	106 t	R2	72 t	R2	65 t
R3	95 t	R3	61 t	R3	54 t
M	336 tm	M	194 tm	M	156 tm



Peso zavorra – Ballast weight – Poids du lest – Ballastgewicht – Peso de lastre

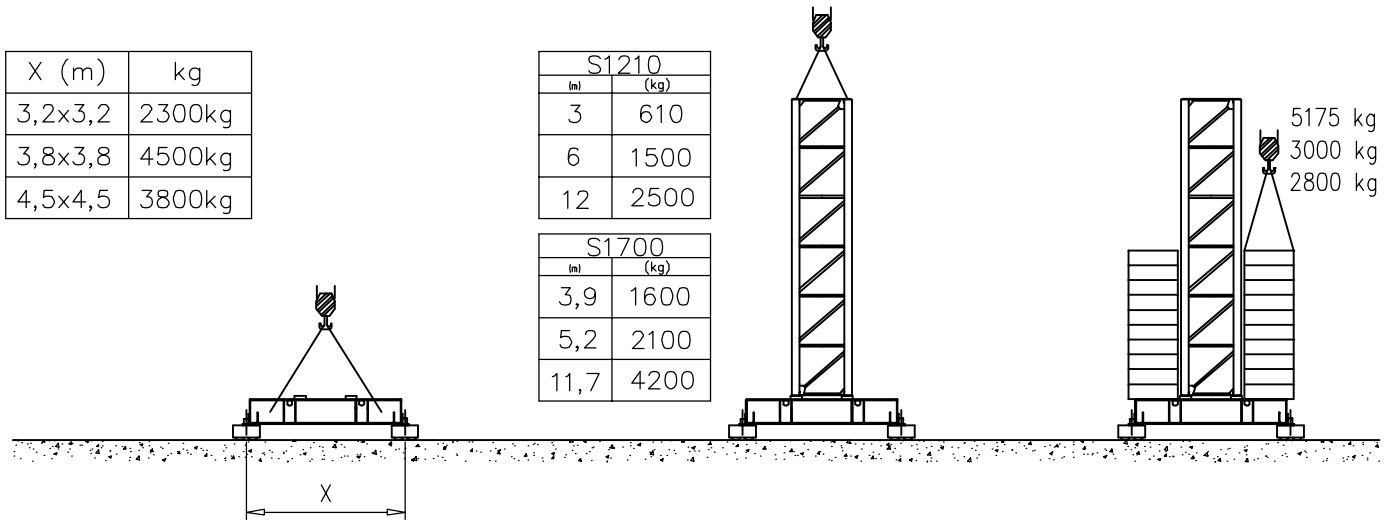


Montaggio – Montage – Erection – Montage – Montaje – Montagem

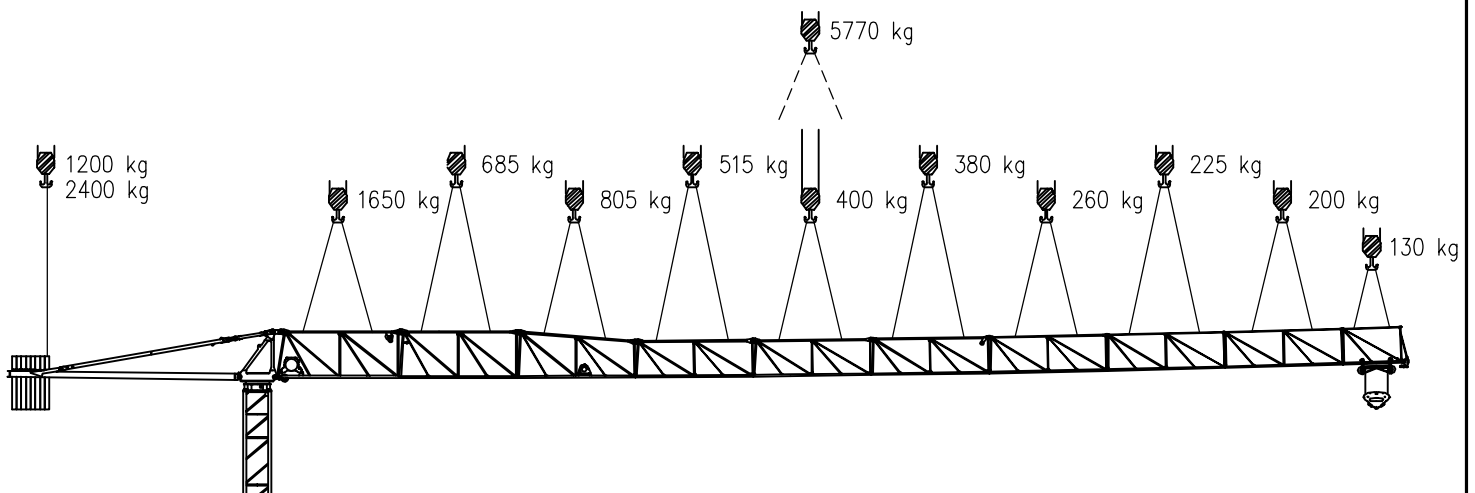
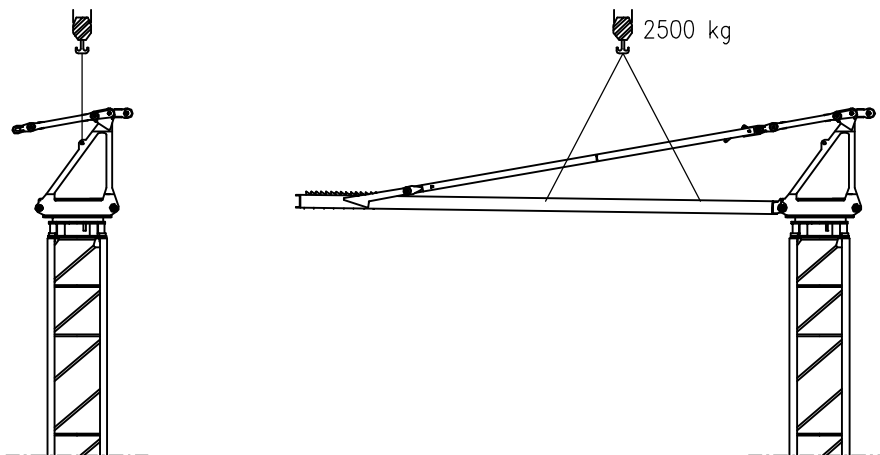
X (m)	kg
3,2x3,2	2300kg
3,8x3,8	4500kg
4,5x4,5	3800kg

S1210	
(m)	(kg)
3	610
6	1500
12	2500

S1700	
(m)	(kg)
3,9	1600
5,2	2100
11,7	4200



Torre	kg
S1700	4500 kg
S1210	3000 kg



Meccanismi – Mechanisms – Mécanismes – Antriebe – Mecanismos

Sollevamento V15.40 Hoisting Levage Heben Elevaciòn Elevaçao			1a	4 m/min	2500 kg	11 kW	V15.40 20 kVA		
Sollevamento V20.60 Hoisting Levage Heben Elevaciòn Elevaçao			2a	20 m/min	2500 kg				
			3a	40 m/min	1200 kg				
Sollevamento V20.40 Hoisting Levage Heben Elevaciòn Elevaçao			1a	7 m/min	2500 kg	14.7 kW	V20.60 24 kVA		
			2a	28 m/min	2500 kg				
			3a	56 m/min	1200 kg				
Sollevamento V25.60 Hoisting Levage Heben Elevaciòn Elevaçao			1a	4 m/min	3000 kg	14.7 kW	V20.40 24 kVA		
			2a	20 m/min	3000 kg				
			3a	40 m/min	1500 kg				
Sollevamento V15.40 Hoisting Levage Heben Elevaciòn Elevaçao				1a	7 m/min	3000 kg	18.5 kW	V25.60 28 kVA	
				2a	28 m/min	3000 kg			
				3a	56 m/min	1500 kg			
	Sollevamento V20.60 Hoisting Levage Heben Elevaciòn Elevaçao			1a	4 m/min	2000 kg	11 kW	V15.40 20 kVA	
				2a	20 m/min	2000 kg			
				3a	40 m/min	1200 kg			
Carrello Trolleying Distribution Katzfahren Distribuciòn Distribuiçao			1a	2 m/min	4000 kg	14.7 kW	V20.60 24 kVA		
			2a	10 m/min	4000 kg				
			3a	20 m/min	2400 kg				
		Rotazione Slewing Orientation Schwenken Orientaciòn Rotaçao			1a	7 m/min	2000 kg	2.2 kW	Potenza elettrica necessaria Puissance électrique nécessaire Necessary electric power Anschlusswert – Potencia
					2a	28 m/min	2000 kg		
					3a	56 m/min	1200 kg		
Traslazione Travelling Translation Kranfahren Traslaciòn Translaçao			1a	3.5 m/min	4000 kg	2.2 kW @ 1200rpm			
			2a	14 m/min	4000 kg				
			3a	28 m/min	2400 kg				
Rete elettrica – Réseau – Mains supply – Netzstrom – Red – Rede electrica			1a	5 m/min	4000 kg	3.7 kW			
			2a	25 m/min	4000 kg				
			3a	50 m/min	2000 kg				
Traslazione Travelling Translation Kranfahren Traslaciòn Translaçao			1a	0 → 10	m/min	2.2 kW @ 1200rpm			
			2a	0 → 20					

Rete elettrica – Réseau – Mains supply – Netzstrom – Red – Rede electrica 400V – 50 Hz

AFM Gru FMgru s.r.l.
via Emilia 11-29010 Pontenure PC ITALY
tel. 0523/510446 ric.aut. fax 0523/510365
www.fmgru.com e-mail: info@fmgru.com

FEM 1.001
2000/14/CE



Documento commerciale non contrattuale
Per tutte le informazioni tecniche riferirsi
alle corrispondenti istruzioni

Unverbindliches Vertriebsdokument.
Für technische Informationen, siehe die
entsprechenden Anweisungen.

This commercial document is not legally
binding. For any technical information, please
refer to the corresponding instructions.

Documento commercial no contractual
Para cualquier información técnica,
ver la noticia correspondiente.

Code: 15ICA37T25A0
Ed. Data Rev. Data
1 15.04.04 2 18.12.07