


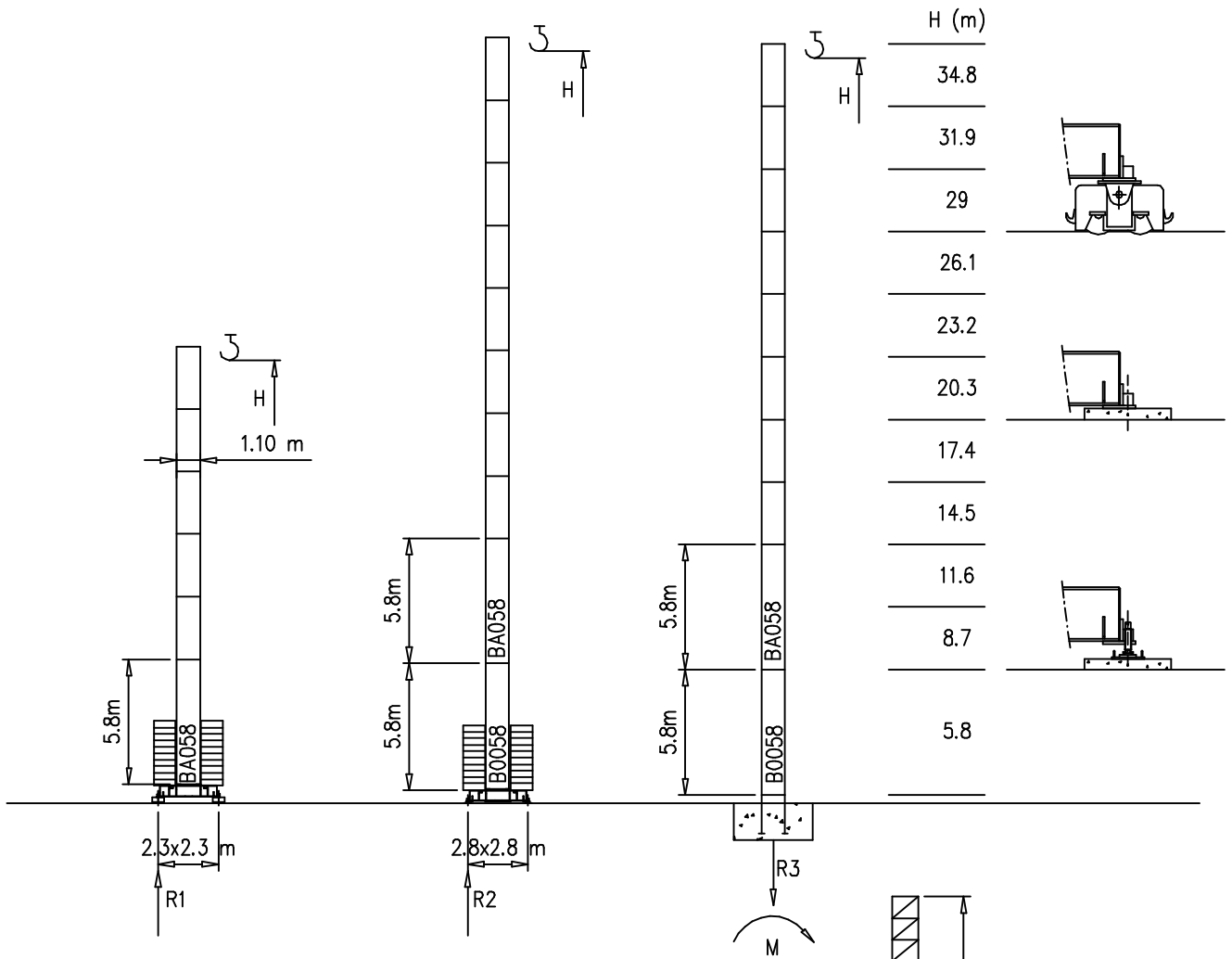
- S1100 – 1.10x1.10 m
- S1210 – 1.21x1.21 m

* V15.40 – S15.40 – V20.60

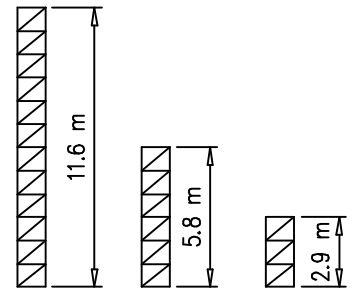
Torre/Reazioni – Masts/Reactions – Mat/Réactions – Maste/Eckdrücke – Māstil/Reacciones – Tramo/Reacções

S1100

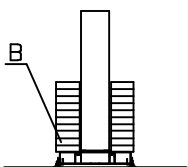
 20 m \rightarrow 35 m



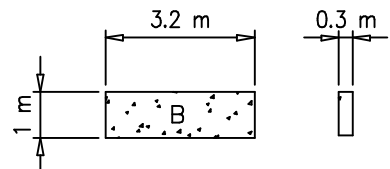
H=29-35 m		H=24-29 m		H=0-23 m	
R1		R1		R1	27 t
R2	30 t	R2	27 t	R2	24.5 t
R3	18 t	R3	17 t	R3	16 t
M	50 tm	M	44 tm	M	39 tm



Peso zavorra – Ballast weight – Poids du lest – Ballastgewicht – Peso de lastre



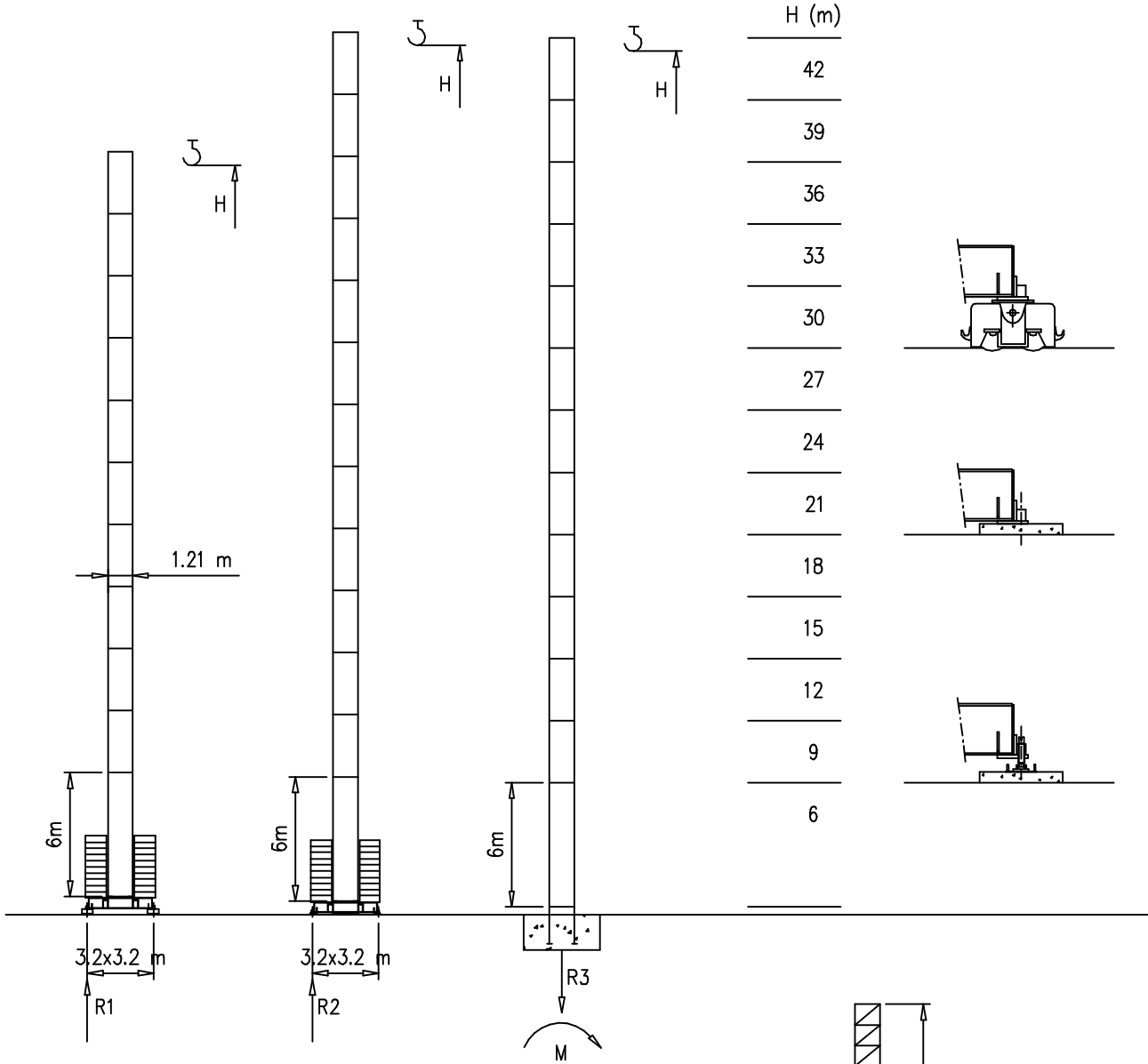
H	n°	Tot.
0-12 m	14 B	30800 kg
13-30 m	18 B	39600 kg
31-35 m	20 B	44000 kg



Torre/Reazioni – Masts/Reactions – Mat/Réactions – Maste/Eckdrücke – Măstil/Reacciones – Tramo/Reacções

S1210

20 m → 35 m

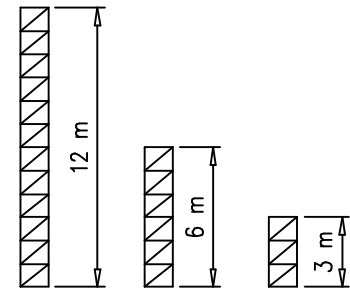


H=24-42 m

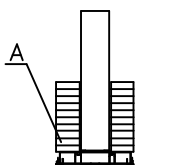
R1	
R2	47.5 t
R3	62 t
M	106 tm

H=0-23 m

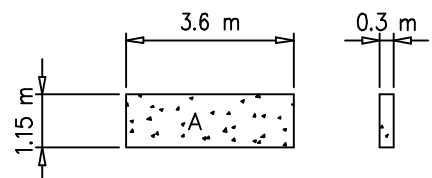
R1	25 t
R2	25 t
R3	16 t
M	39 tm



Peso zavorra – Ballast weight – Poids du lest – Ballastgewicht – Peso de lastre

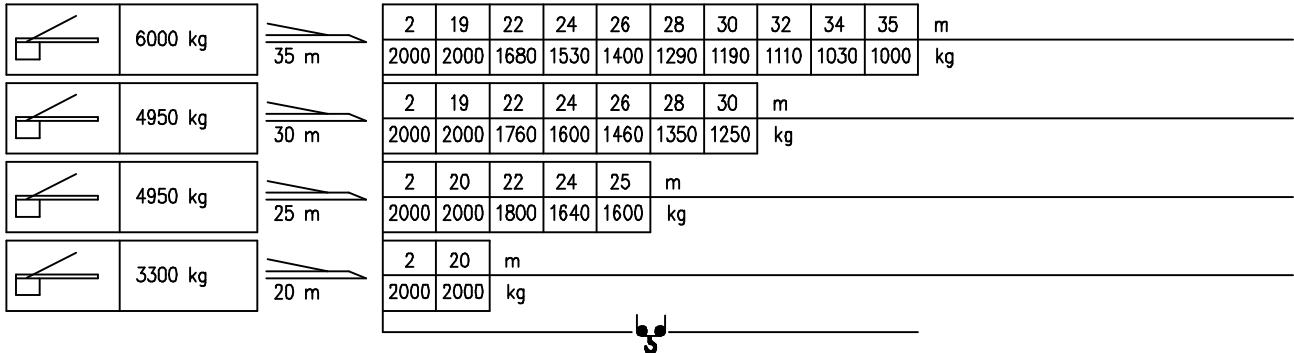


H	n°	Tot.
0-24 m	12 A	36000 kg
25-36 m	16 A	48000 kg
37-42 m	18 A	54000 kg

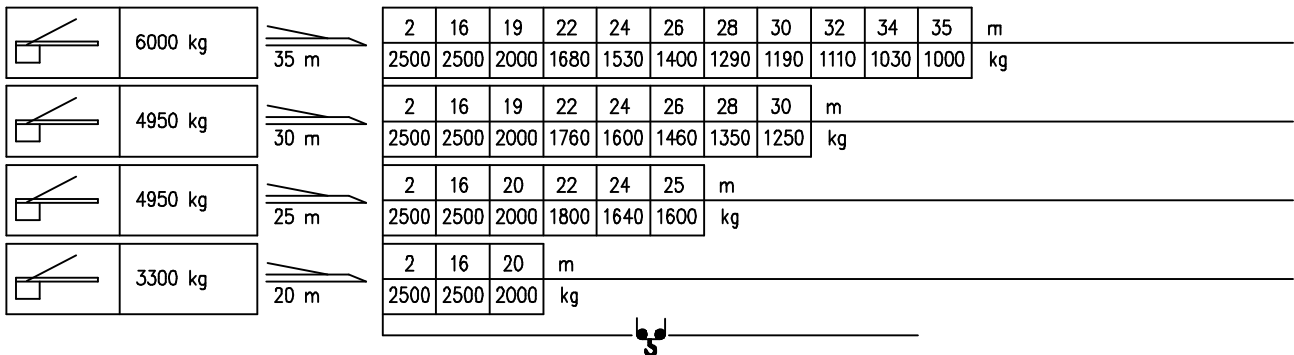


Curve di carico – Courbes de charges – Load diagrams – LastKurven – Curvas de cargas

Pmax 2000 kg



Pmax 2500 kg

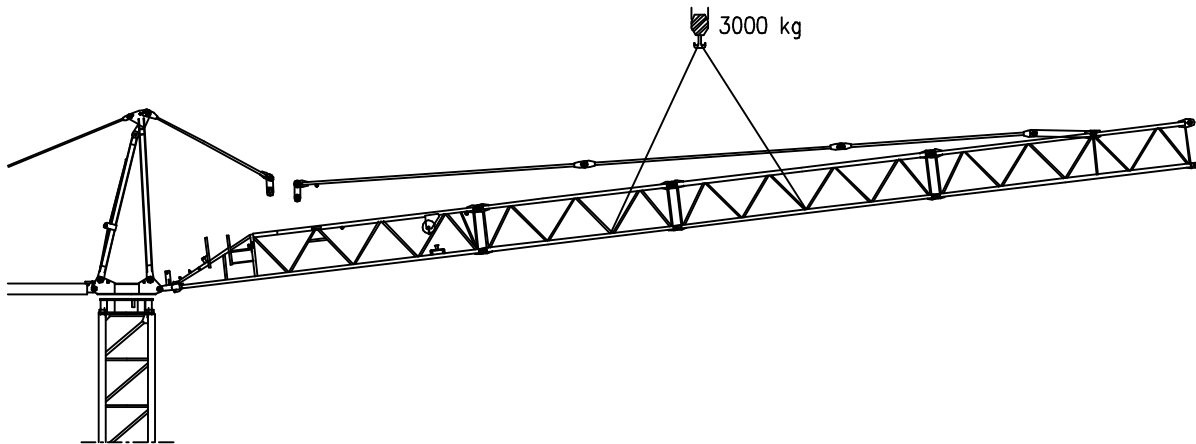
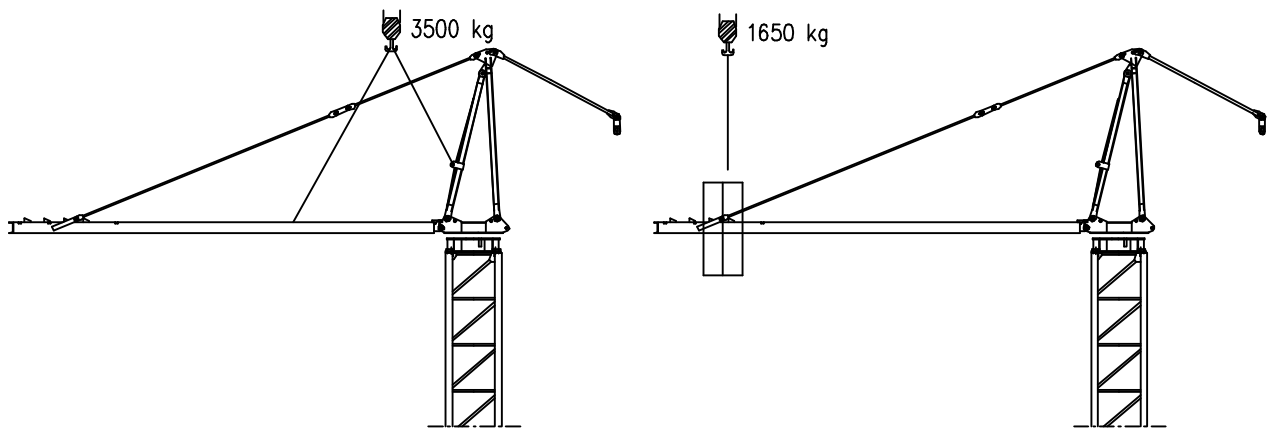
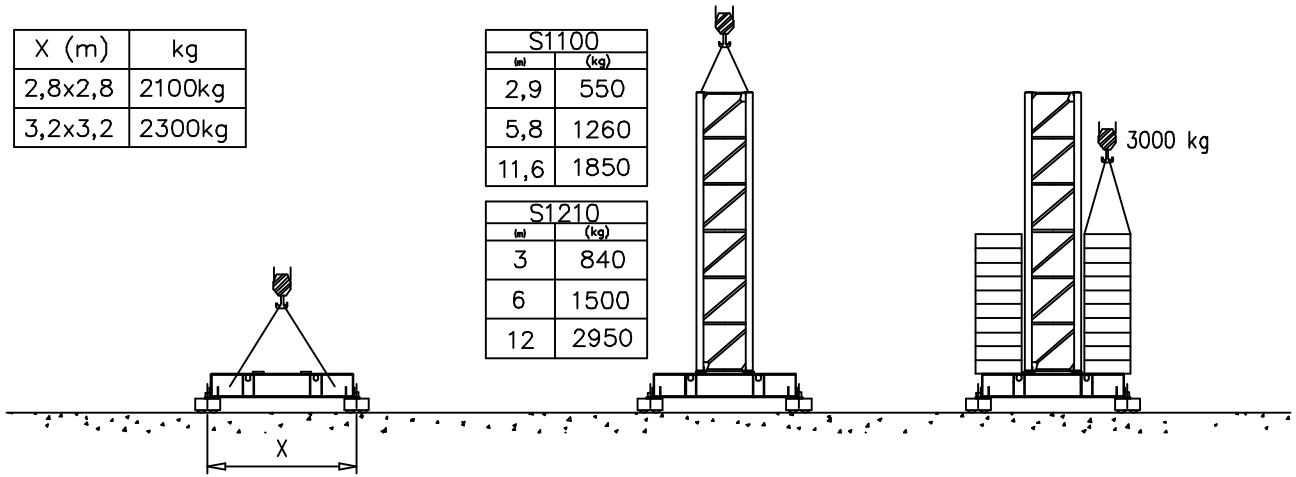


Montaggio – Montage – Erection – Montage – Montaje – Montagem

X (m)	kg
2,8x2,8	2100kg
3,2x3,2	2300kg

S1100	
(m)	(kg)
2,9	550
5,8	1260
11,6	1850

S1210	
(m)	(kg)
3	840
6	1500
12	2950



Meccanismi – Mechanisms – Mécanismes – Antriebe – Mecanismos

Sollevamento S9.30 e V10.30 Hoisting Levage Heben Elevaciòn Elevaçao			1a	4 m/min	2000 kg	7 kW	S9.30		
2a			16 m/min	2000 kg	V10.30				
3a			32 m/min	1000 kg	13 kVA				
Sollevamento S15.40 e V15.40 Hoisting Levage Heben Elevaciòn Elevaçao				1a	4 m/min	2500 kg	11 kW	S15.40	
2a				20 m/min	2500 kg	21 kVA			
3a				40 m/min	1200 kg	19 kVA			
Sollevamento V20.60 Hoisting Levage Heben Elevaciòn Elevaçao					1a	7 m/min	2500 kg	14.7 kW	V20.60
2a					28 m/min	2500 kg	23 kVA		
3a					56 m/min	1200 kg			
Carrello Trolley Distribution Katzfahren Distribuciòn Distribuçao					1a	OP 5 m/min	2500 kg	1.5 kW	Potenza elettrica necessaria Puissance électrique nécessaire Necessary electric power Anschlusswert Potencia
2a					17 m/min	2500 kg			
3a					34 m/min	1000 kg			
Rotazione Slewing Orientation Schwenken Orientaciòn Rotaçao					1a	0 → 0.2	giri/min tr/min rp/min	2.2 kW @ 1200rpm	
2a					0 → 0.5				
3a					0 → 0.8				
Traslazione Travelling Translation Kranfahren Traslaciòn Traslaçao					1a	0 → 20		3.7 kW	

Rete elettrica – Réseau – Mains supply – Netzstrom – Red – Rede electrica 400V – 50 Hz

FMgru s.r.l.
 via Emilia 11-29010 Pontenure PC ITALY
 tel. 0523/510446 ric.aut. fax 0523/510365
 www.fmgru.com e-mail: info@fmgru.com

FEM 1.001
2000/14/CE



Documento commerciale non contrattuale
Per tutte le informazioni tecniche riferirsi
alle corrispondenti istruzioni

Unverbindliches Vertriebsdokument.
Für technische Informationen, siehe die
entsprechenden Anweisungen.

This commercial document is not legally
binding. For any technical information, please
refer to the corresponding instructions.

Documento comercial no contractual
Para cualquier información técnica,
ver la noticia correspondiente.

Code: 15ICA37C20A0	
Ed.	Rev Data
1	05.06.03 1 24.11.05